



**Introducing...**



# **SVSOLID™**

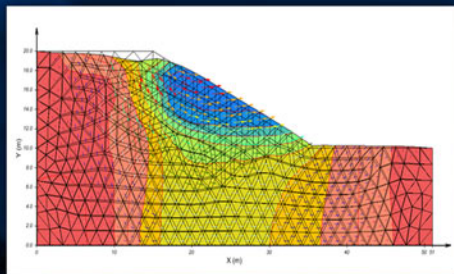
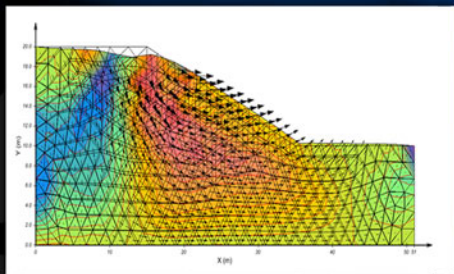
## **Large and Small Strain Stress / Deformation Analysis**

**SVSolid™ is designed to calculate the stress state and deformations in soils under various loading conditions. It is a 1D, 2D, axisymmetric and 3D finite-element program for engineering soil mechanics computations. SVSolid™ simulates the behavior of soil or rock which may undergo elastic or plastic deformations. SVSolid™ may also be coupled with our flow (SVFlux™) or slope stability (SVSlope®) software. Elastic-plastic deformation models such as von Mises or Druker-Praeger have recently been added to the software.**

**Lagrangian large-strain analysis has recently been added to SVSolid™, which allows the mesh to move with the material as it deforms. Models such as plastic collapse are therefore modeled accurately.**

# TOP 8 REASONS TO PURCHASE

1. Large strain analysis handled by a moving mesh
2. Variety of elasto-plastic strength models including von Mises and Druker-Praeger
3. Coupled consolidation analysis (when coupled with SVFlux™)
4. 1D, 2D, axisymmetric or full 3D analysis
5. Coupled slope stability analysis (when coupled with SVSlope®)
6. Unsaturated heave / shrinkage analysis (when coupled with SVFlux™)
7. Comprehensive help systems
8. Streamlined and easy-to-use interface with right-click menus

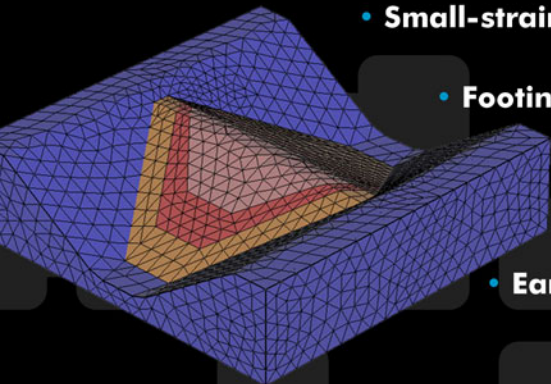


**The software help systems have been designed to allow a new user to quickly be up and solving problems. A comprehensive user's manual, verification manual, theory manual and tutorial manual in addition to animated tutorials on our website, provide documentation on all aspects of SVSolid™.**

**The software has been subjected to a rigorous quality assurance program.**

## **APPLICATIONS OF THE SVSOLID™ SOFTWARE INCLUDE:**

- Consolidation under landfills
- Consolidation under foundations
- Large-strain elasto-plastic deformations under foundations
- Heave / Shrinkage unsaturated analysis
- Small-strain deformation analysis
- Footing, retaining walls, and excavation analysis
- Foundation design
- Earth dam stress analysis





part of  
**SVOFFICE**  
Next Generation Geotechnical Software **2009**



**SOILVISION SYSTEMS LTD.**

**202-640 Broadway Ave.**

**Saskatoon, SK**

**S7N 1A9**

**Phone : (306) 477-3324**

**Fax : (306) 955-4575**

**[www.soilvision.com](http://www.soilvision.com)**